

NOTES

- k 00.00.08 Units renumbered in accordance with Post Office requirements. Drawing title amended accordingly. scrip/e
- j 06.08.08 Unit A axes applied scrip/e
- i 30.07.08 Scale changed to 1:100 @ A1 scrip/e
- h 20.07.08 Blockwork and Wall Setting-out dimensions added scrip/e
- g 20.07.08 Blockwork and Wall Setting-out dimensions added scrip/e
- f 25.06.08 CONSTRUCTION ISSUE scrip/e
- e 14.04.08 Small sizes revised and drawings updated to suit. scrip/e
- d 28.01.08 Various amendments. Area schedule updated. TENDER issue scrip/e
- c 03.12.07 PLANNING ISSUE scrip/e
- b 21.10.07 Office area and 10 units. 1b and 1c scrip/e
- a 01.10.07 Updated Elevations BB 0/3

REVISIONS

CONSTRUCTION

- status 10/09/07
- date 10/09/07
- scale @ A1 1:100
- by/checked DG/PE
- office Liverpool

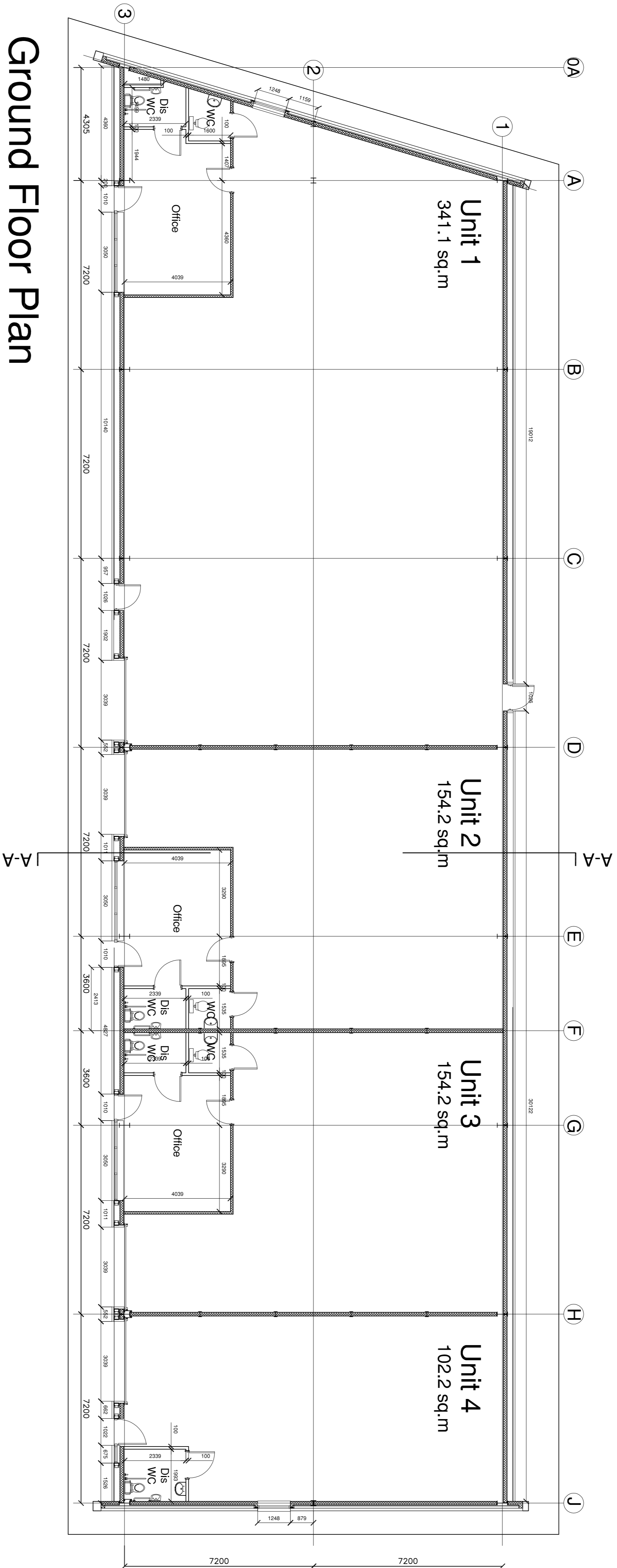
NORTHERN TRUST
Goldendale West
Stoke-on-Trent
Staffordshire

060206068-0023K
060206068-23K_24H_25K_26K_27K_28H

WORKSPACE UNITS
Units 1-4 Plan

SMC
DTR:UK
Architects and Designers

- 1000/1000/1000 St. Peter's Church, Manchester, M2 7JL
Tel: +44(0)161 834 4669 Fax: +44(0)161 834 4668 email: manchester@smc-dtr.co.uk
- 5th North Street, Leeds, LS2 7RN
Tel: +44(0)113 244 0068 Fax: +44(0)113 244 0068 email: leeds@smc-dtr.co.uk
- 5th, 6th & 7th Floor, Liverpool, L3 5AF
Tel: +44(0)151 255 6132 Fax: +44(0)151 255 6132 email: liverpool@smc-dtr.co.uk
- The Barracks, White Cross, South Road, Lancaster, LA1 4JZ
Tel: +44(0)1524 842 714 Fax: +44(0)1524 842 711 email: liverpool@smc-dtr.co.uk
www.smc-dtr.co.uk



Ground Floor Plan